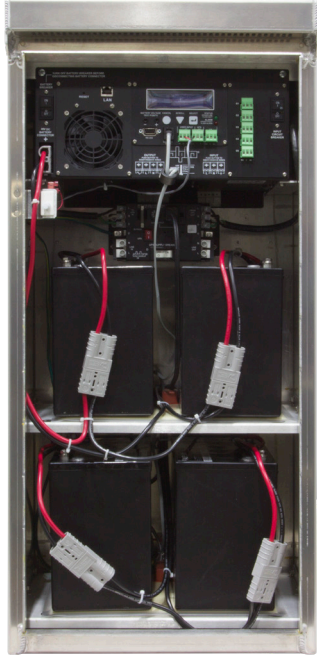




an EnerSys® company

# Alpha® Traffic Mini BBS

## Battery Backup Systems



- Consolidated battery backup system (BBS) designed to power ATC, NEMA M, P & 336 (or similar style) traffic controller cabinets
- Ideal solution for space constraint applications providing >4 hours of battery runtime\*
- Self-contained UPS, factory wired, tested and ready to install, reducing installation time and cost\*\*
- Alpha's "No Worries" 5 Year Warranty full replacement with AlphaCell™ 100XTV batteries
- Compact, integrated 350W or 1000W battery backup system, utilizing the same design and similar features of the highly successful and reliable FXM series UPS

**Alpha® Traffic Mini Battery Backup Systems (BBS) is a rugged enclosure made of 0.125" aluminum and designed to easily accommodate an Alpha® uninterruptible power supply, Universal Automatic Transfer Switch and up to four AlphaCell™ 100XTV or two 195/240XTV's.**

The Traffic Mini BBS is an outdoor-rated (NEMA 3R) enclosure. Features include: drop down lift off door, Type 2 Corbin lock, integrated document holder, tamper switch, wide range Automatic Voltage Regulation (AVR), remote monitoring/control and temperature compensated battery charging for extended battery

life. The Alpha® Traffic Mini BBS provides constant, reliable backup power for Traffic, ITS, Access Control, Security, Public Utility and Telecommunications applications in a compact, all-in-one enclosure. The system provides the same functionality as the Alpha class leading FXM Series, for lower power space constraint applications, in a single easy to install cabinet with a favorable curb appeal.

\*Runtime calculated with 450W resistive load with 4 x AlphaCell 100XTV at 25°C

\*\*Excluding batteries

# Alpha® Traffic Mini BBS Battery Backup System

## Standard Features

- Integrated solution with uninterruptible power supply module, Universal Automatic Transfer Switch, document holder, battery cable kit and tamper switch
- Two shelves for up to four AlphaCell™ 100XTV or two 195/240 XTV batteries
- Can house optional Alpha® Remote Battery Monitoring system
- Mounting options include pole, wall, side or pedestal

Model	Traffic Mini 350 BBS	Traffic Mini 1000 BBS
Part Number	0170021-040	0170021-010

## Electrical

System Input Voltage:	120VAC	
Input Current Rating*:	5.3A	14A
Input Frequency:	50/60 Hz ±5% (Autosense)	
AVR Range:	88-152VAC	85-169VAC
System DC Voltage:	24VDC	48VDC
Max Charge Current:	6A DC	10A DC
System Output Voltage:	120 VAC	
Output Power@ 50°C:	350W	1000W
Output Frequency:	= Input Frequency	
Output Voltage Regulation:	±10% Line Mode ±2% Inverter Mode	
Output Waveform:	Pure Sine Wave	

## Mechanical

Dimensions:	<b>inches:</b> 34H x 16W x 12D <b>mm:</b> 864H x 406W x 305D	
Weight (w/o Batteries):	55lbs (25kg)	65lbs (29.5kg)
Construction:	Aluminum, 5052-H32 (High strength corrosion resistance)	
Finish:	Natural Aluminum	
Cable Entrance:	Bottom or Rear	
Mounting:	Side mount, Optional - wall, pole or pedestal kit available	
Access:	Removable bottom shelf for easy wiring access	
AC Input Connections AWG:	Terminal blocks #14 to #6 AWG (2.08 to 13.3 mm <sup>2</sup> )	
AC Output Connections AWG:	Terminal blocks #14 to #6 AWG (2.08 to 13.3 mm <sup>2</sup> )	
Dry Contact AWG:	Terminal blocks #26 to #12 AWG (0.2 to 2.5 mm <sup>2</sup> )	

## Communication Interface

Display:	2 x 20 backlit alpha-numeric LCD	
Ports:	<ul style="list-style-type: none"> <li>• USB-B: Local Communication</li> <li>• RJ45: Remote Communication</li> <li>• RJ11: Battery Temperature Compensation</li> </ul>	<ul style="list-style-type: none"> <li>• RS232: Local Communication</li> <li>• RJ45: Remote Communication</li> <li>• RJ11: Battery Temperature Compensation</li> </ul>
Indicators:	<b>Green and Red LED's</b> <ul style="list-style-type: none"> <li>• Solid Green: Line Mode</li> <li>• Flashing Green: Inverter Mode</li> <li>• Flashing Red: Alarm Solid Red: Fault</li> </ul>	
Dry Contact:	2 x Programmable NO/NC (250VAC, 1A), 2 x user inputs	5 x Programmable NO/NC (250VAC, 1A), 1 x 48VDC/500mA, 3 x user inputs, 1 x ATS




an EnerSys® company

**Alpha Technologies Services, Inc.** USA: 3767 Alpha Way, Bellingham, WA 98226 Canada: 7700 Riverfront Gate, Burnaby, BC V5J 5M4  
Toll Free North America: +1 800 322 5742 Outside US: +1 360 647 2360 Technical Support: +1 800 863 3364  
For more information visit [www.alpha.com](http://www.alpha.com)

© 2020 Alpha Technologies Services, Inc. All Rights Reserved. Trademarks and logos are the property of Alpha Technologies Services, Inc. and its affiliates unless otherwise noted. Subject to revisions without prior notice. E. & O.E.

07/2020  
#047-0314-00 REV B

# Alpha® Traffic Mini BBS Battery Backup System

Model	Traffic Mini 350 BBS	Traffic Mini 1000 BBS
Part Number	0170021-040	0170021-010
<b>Environmental</b>		
Temperature:	<b>Operating:</b> -40 to 74 °C (-4 to 165 °F)** <b>Storage:</b> -40 to 75 °C (-40 to 167 °F)	
Relative Humidity:	Up to 95%, non-condensing	
Altitude:	Operating: Up to 2000 m (6562 ft) above sea level	
<b>Performance</b>		
Typical Output Voltage THD:	<3% (resistive load)	
Typical Efficiency***:	Line Mode > 96% Inverter Mode > 82%	Line Mode > 92% Inverter Mode > 82%
Load Crest Factor:	3:1 (load dependent)	
<b>Agency Compliance</b>		
Electrical Safety:	UL1778, CSA 22.2 No 107.3, UL 60950-1, CSA-C22.2 60950-1	
Marks:		
EMC:	CFR47, Part 15 Subpart B, Class A; CES-003 Class A	
NEMA:	3R	
<b>Standard System Configuration</b>		
0.125" Thick Natural Aluminum Enclosure 350 or 1000W UPS Module Universal Automatic Transfer Switch Battery Cable Kit - ¼" Ring Lug Document Holder Door Filter Tamper Switch ADD AlphaCell Batteries - 4 x 100 XTV (Mini 1000 BBS) or 2 x 195/240 XTV (Mini 350 BBS)		
<b>Optional Accessories</b>		
<ul style="list-style-type: none"> <li>• Remote Battery Monitoring System</li> <li>• Battery Heater Mats</li> <li>• Mounting Brackets - Pole or Wall</li> <li>• Pedestal Mounting Kit</li> </ul>		
*@ nominal input voltage and maximum battery charging current **Power module only. Output power derates above 50 °C ***Efficiency is measured at an ambient temperature of 25 °C, full resistive condition and nominal line and battery voltage		



an EnerSys® company

**Alpha Technologies Services, Inc.** USA: 3767 Alpha Way, Bellingham, WA 98226 Canada: 7700 Riverfront Gate, Burnaby, BC V5J 5M4  
 Toll Free North America: +1 800 322 5742 Outside US: +1 360 647 2360 Technical Support: +1 800 863 3364  
 For more information visit [www.alpha.com](http://www.alpha.com)

© 2020 Alpha Technologies Services, Inc. All Rights Reserved. Trademarks and logos are the property of Alpha Technologies Services, Inc. and its affiliates unless otherwise noted. Subject to revisions without prior notice. E. & O.E.

07/2020  
 #047-0314-00 REV B